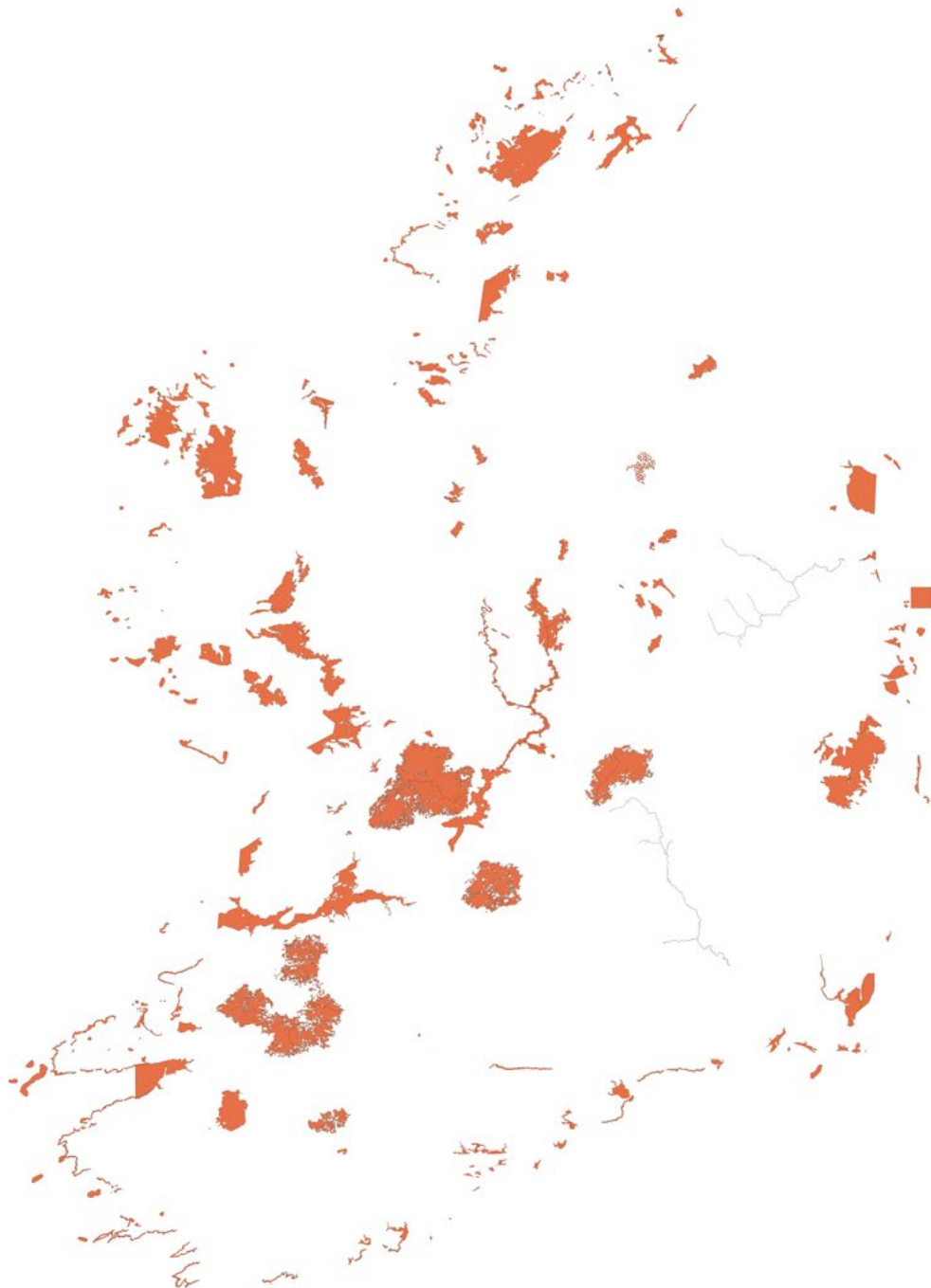
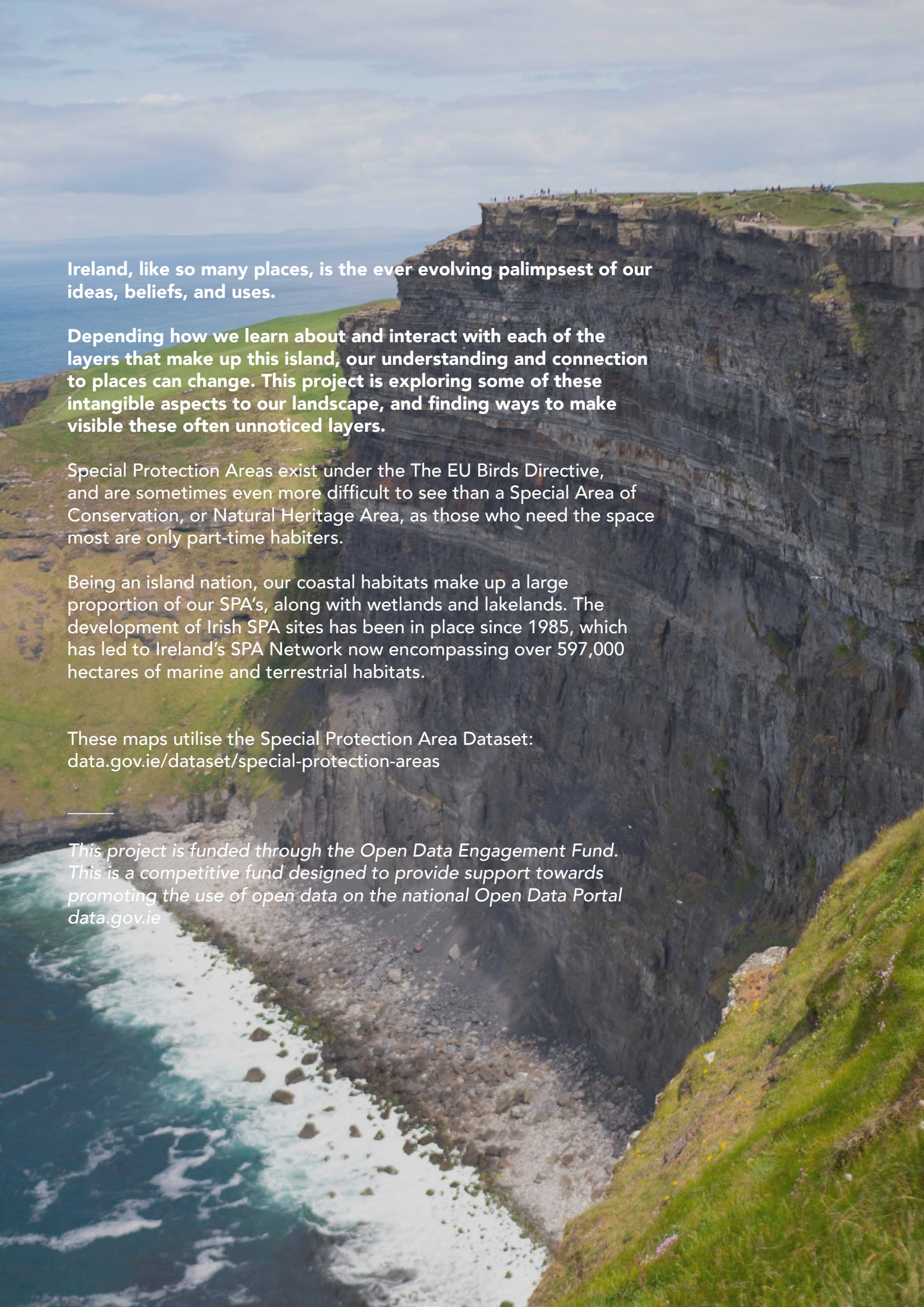


# Remapping, Reimagining



Mapping: Special Protection Areas  
Ellie Berry



Ireland, like so many places, is the ever evolving palimpsest of our ideas, beliefs, and uses.

Depending how we learn about and interact with each of the layers that make up this island, our understanding and connection to places can change. This project is exploring some of these intangible aspects to our landscape, and finding ways to make visible these often unnoticed layers.

Special Protection Areas exist under the The EU Birds Directive, and are sometimes even more difficult to see than a Special Area of Conservation, or Natural Heritage Area, as those who need the space most are only part-time habiters.

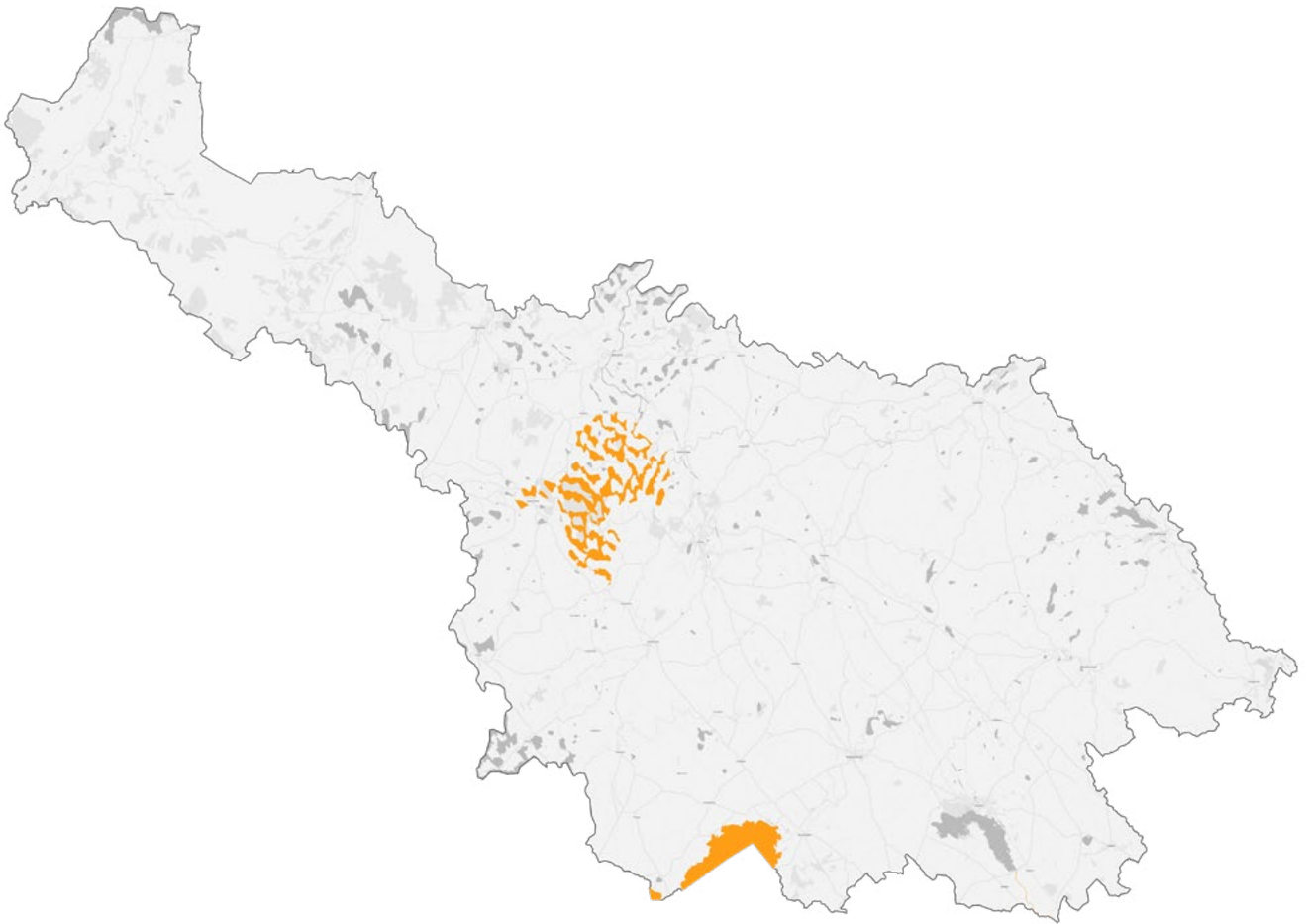
Being an island nation, our coastal habitats make up a large proportion of our SPA's, along with wetlands and lakelands. The development of Irish SPA sites has been in place since 1985, which has led to Ireland's SPA Network now encompassing over 597,000 hectares of marine and terrestrial habitats.

These maps utilise the Special Protection Area Dataset:  
[data.gov.ie/dataset/special-protection-areas](https://data.gov.ie/dataset/special-protection-areas)

---

*This project is funded through the Open Data Engagement Fund. This is a competitive fund designed to provide support towards promoting the use of open data on the national Open Data Portal [data.gov.ie](https://data.gov.ie)*

# Special Protection Areas

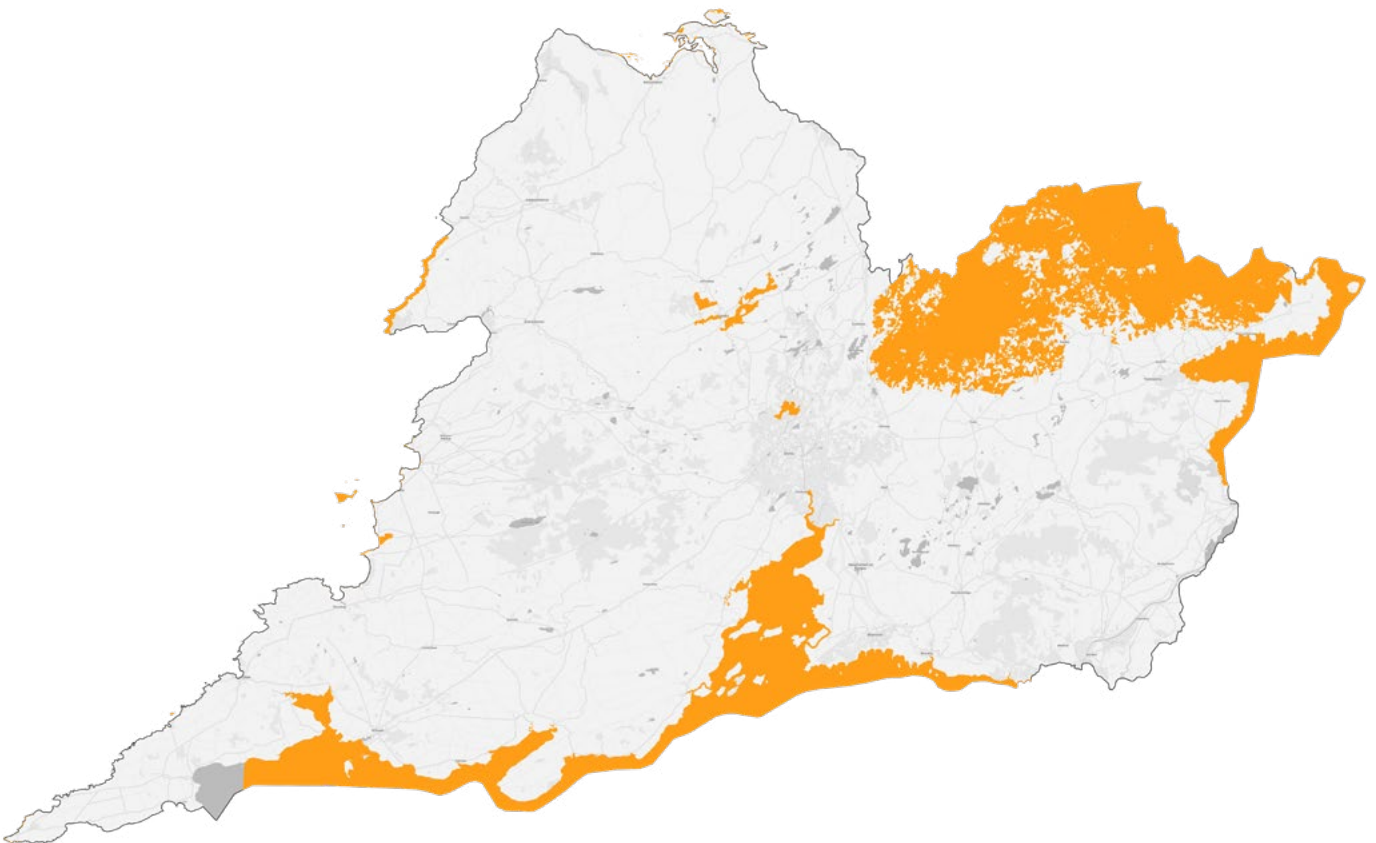


## Cavan

**Sample of the qualifying interests for the Special Protection Areas of Cavan:**

Great Crested Grebe (*Podiceps cristatus*), Whooper Swan (*Cygnus cygnus*), Wigeon (*Anas penelope*), Pochard (*Aythya ferina*), Tufted Duck (*Aythya fuligula*), Goldeneye (*Bucephala clangula*), and Wetland and Waterbirds.

# Special Protection Areas

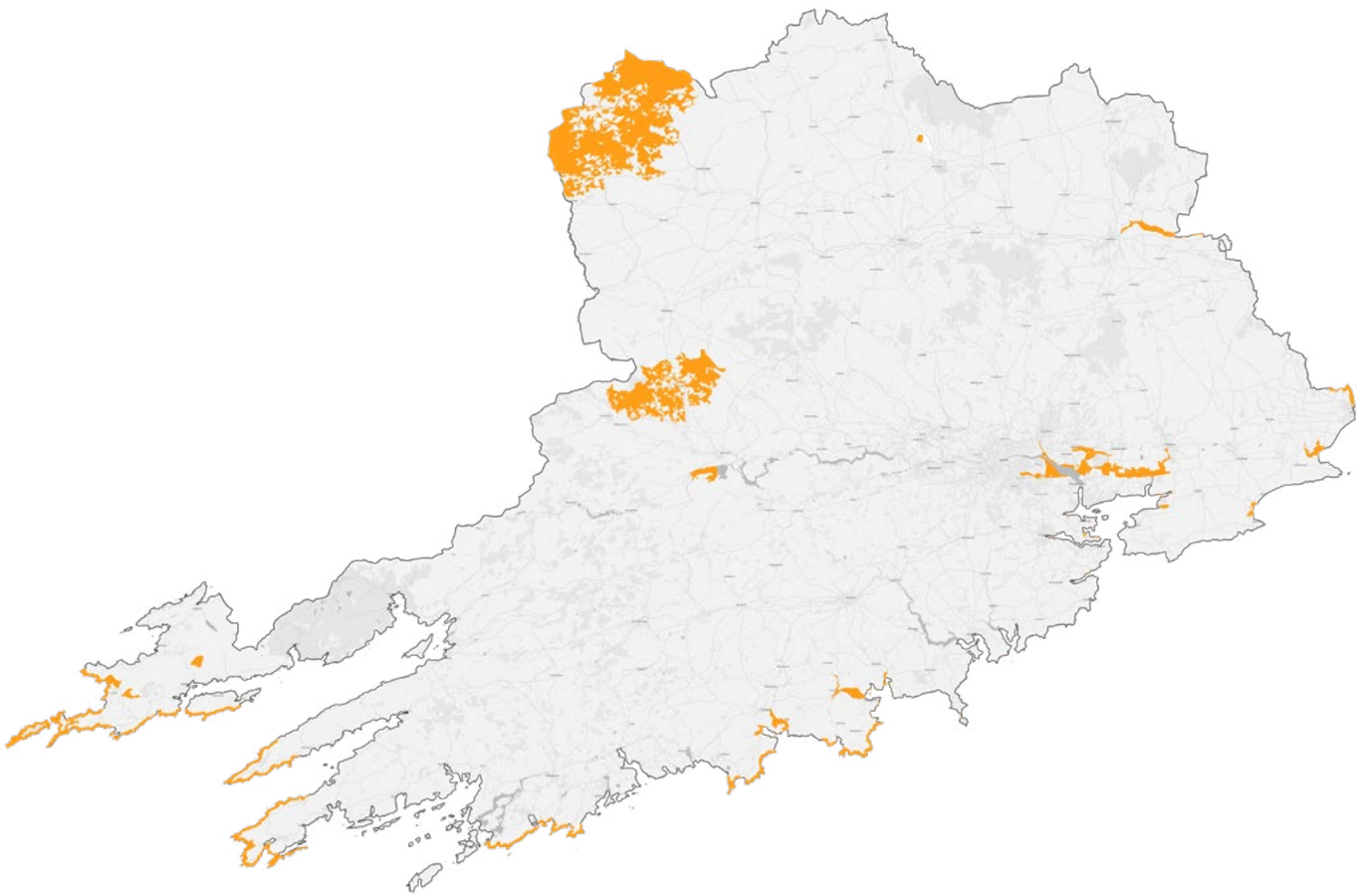


## Clare

### Sample of the qualifying interests for the Special Protection Areas of Clare:

Kittiwake (*Rissa tridactyla*), Guillemot (*Uria aalge*), Fulmar (*Fulmarus glacialis*), Razorbill (*Alca torda*), Puffin (*Fratercula arctica*), Chough (*Pyrrhocorax pyrrhocorax*), Little Grebe (*Tachybaptus ruficollis*), Whooper Swan (*Cygnus cygnus*), Wigeon (*Anas penelope*) Teal (*Anas crecca*), Black-tailed Godwit (*Limosa limosa*), Wetland and Waterbirds.

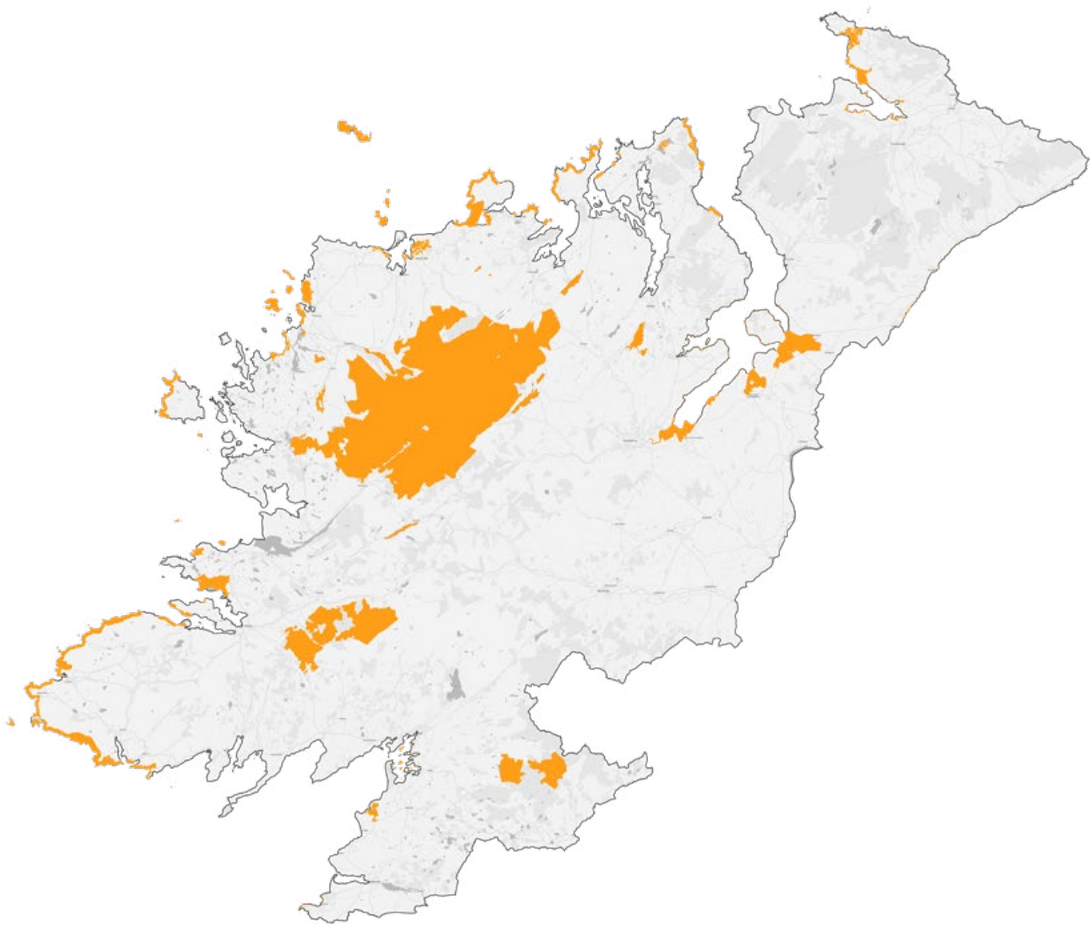
# Special Protection Areas



## Cork

**Sample of the qualifying interests for the Special Protection Areas of Cork:**  
Wigeon (*Anas penelope*), Coot (*Fulica atra*), Teal (*Anas crecca*), Mallard (*Anas platyrhynchos*), Chough (*Pyrrhocorax pyrrhocorax*), Peregrine (*Falco peregrinus*), Kittiwake (*Rissa tridactyla*), Guillemot (*Uria aalge*), and Wetland and Waterbirds.

# Special Protection Areas

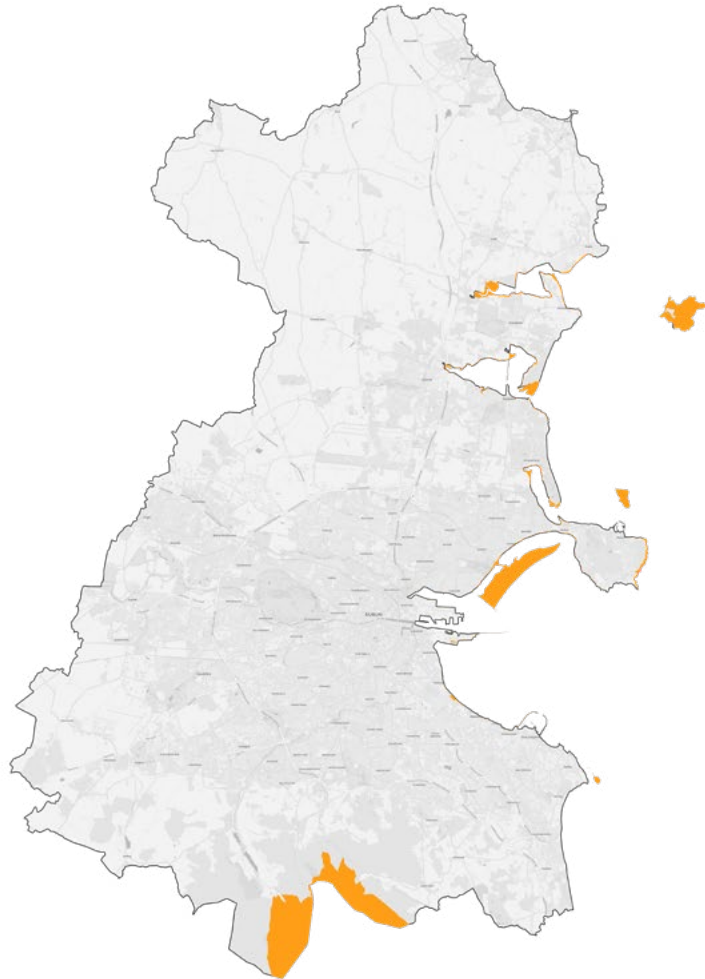


## Donegal

**Sample of the qualifying interests for the Special Protection Areas of Donegal:**

Shag (*Phalacrocorax aristotelis*), Barnacle Goose (*Branta leucopsis*), Common Gull (*Larus canus*), Red-throated Diver (*Gavia stellata*), Merlin (*Falco columbarius*), Peregrine (*Falco peregrinus*), Golden Plover (*Pluvialis apricaria*), Dunlin (*Calidris alpina schinzii*)

# Special Protection Areas

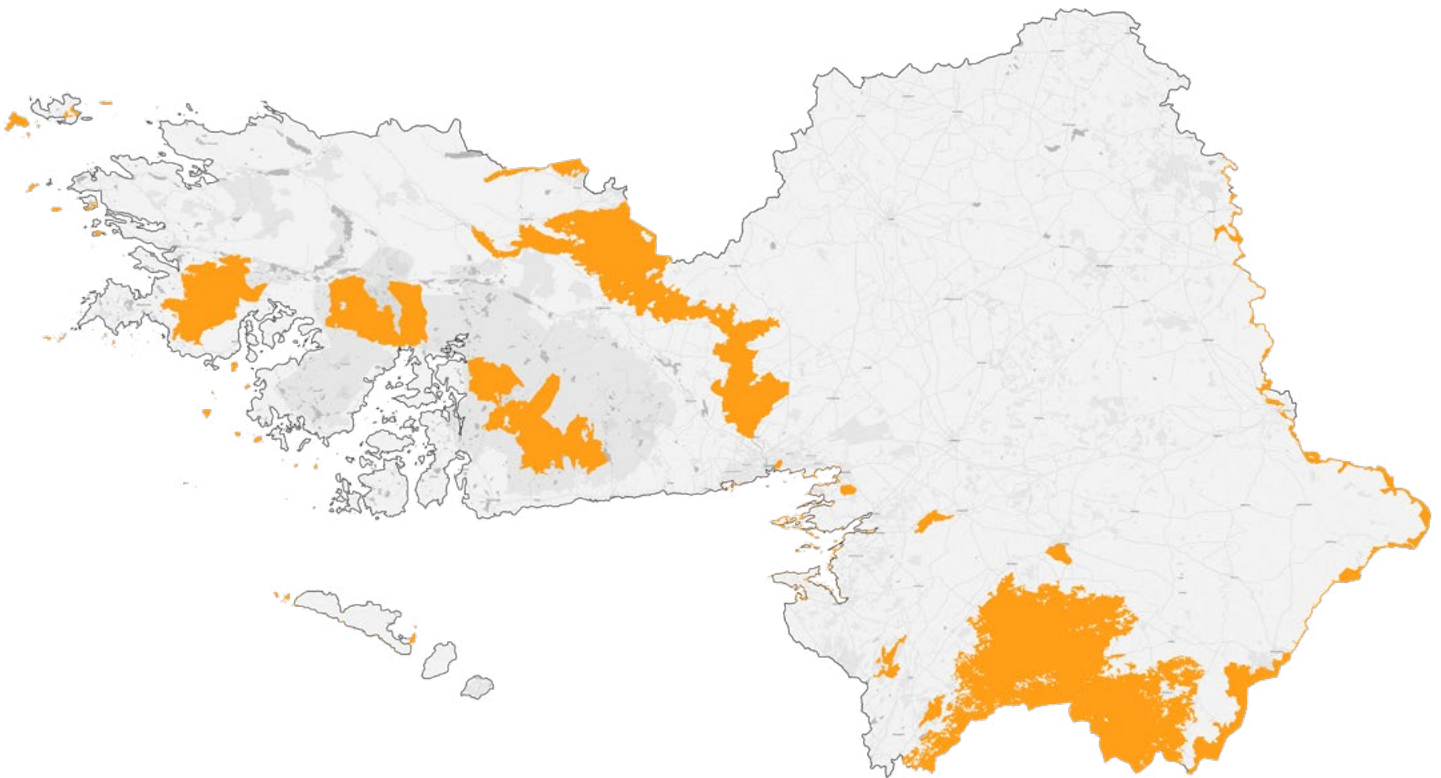


## Dublin

### Sample of the qualifying interests for the Special Protection Areas of Dublin:

Roseate Tern (*Sterna dougallii*), Common Tern (*Sterna hirundo*), Arctic Tern (*Sterna paradisaea*), Light-bellied Brent Goose (*Branta bernicla hrota*), Oystercatcher (*Haematopus ostralegus*), Ringed Plover (*Charadrius hiaticula*), Grey Plover (*Pluvialis squatarola*), Knot (*Calidris canutus*), Sanderling (*Calidris alba*), Dunlin (*Calidris alpina*)

# Special Protection Areas



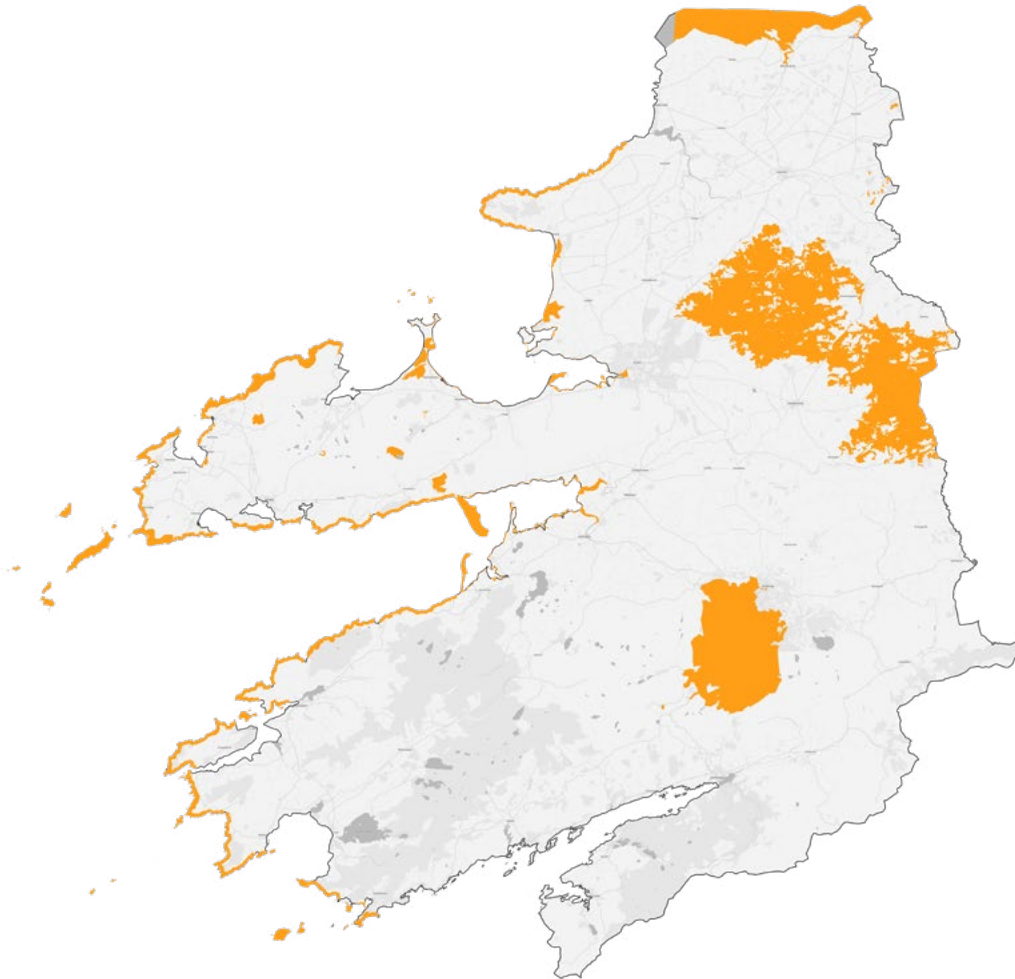
## Galway

### Sample of the qualifying interests for the Special Protection Areas of Galway:

Black-throated Diver (*Gavia arctica*) Great Northern Diver (*Gavia immer*), Cormorant (*Phalacrocorax carbo*), Grey Heron (*Ardea cinerea*), Light-bellied Brent Goose (*Branta bernicla hrota*), Wigeon (*Anas penelope*), Teal (*Anas crecca*), Red-breasted Merganser (*Mergus serrator*), Ringed Plover (*Charadrius hiaticula*), Golden Plover (*Pluvialis apricaria*) Lapwing (*Vanellus vanellus*)



# Special Protection Areas



## Kerry

**Sample of the qualifying interests for the Special Protection Areas of Kerry:**

Fulmar (*Fulmarus glacialis*), Peregrine (*Falco peregrinus*), Kittiwake (*Rissa tridactyla*), Guillemot (*Uria aalge*), Chough (*Pyrrhocorax pyrrhocorax*), Manx Shearwater (*Puffinus puffinus*), Storm Petrel (*Hydrobates pelagicus*), Lesser Black-backed Gull (*Larus fuscus*), Arctic Tern (*Sterna paradisaea*)

# Special Protection Areas



## Kildare

**Sample of the qualifying interests for the Special Protection Area of Kildare:**  
Greylag Goose (*Anser anser*), Lesser Black-backed Gull (*Larus fuscus*)

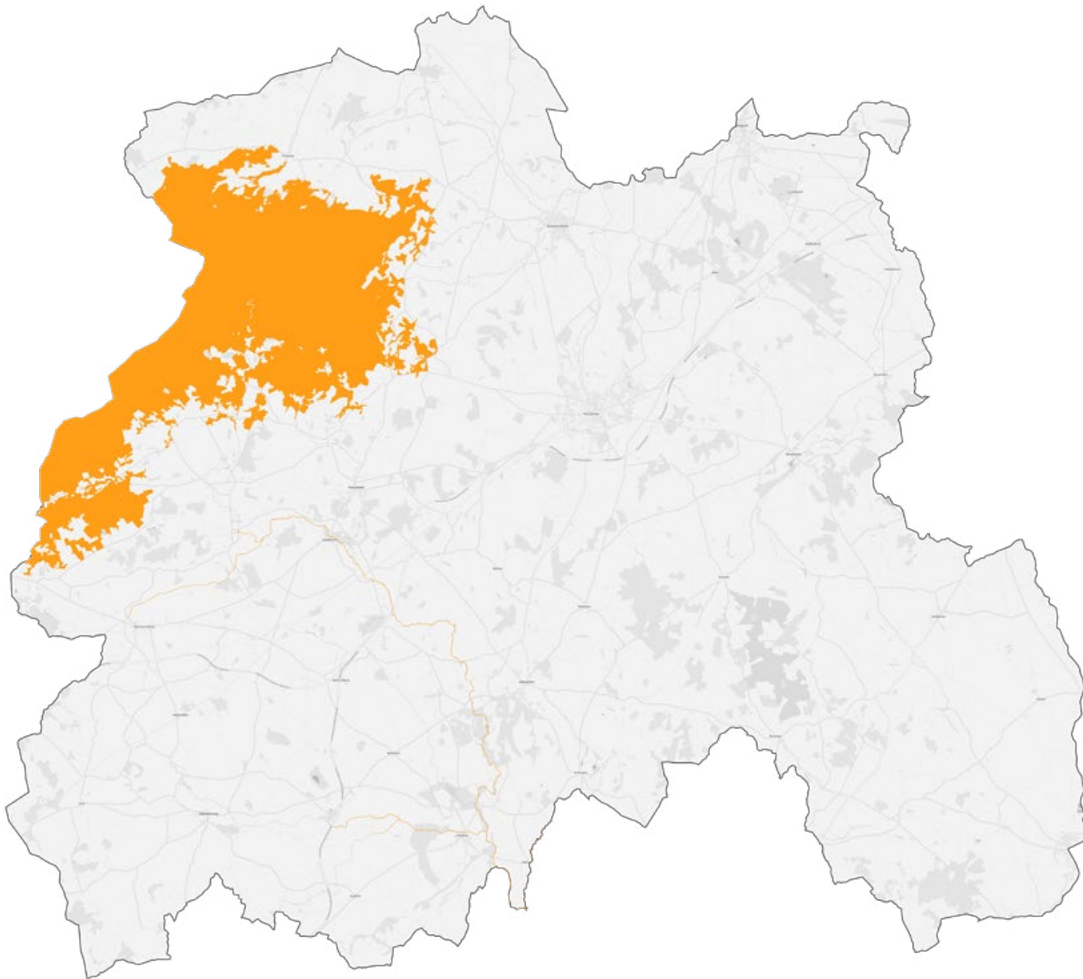
# Special Protection Areas



## Kilkenny

**Sample of the qualifying interests for the Special Protection Area of Kilkenny:**  
Kingfisher (*Alcedo atthis*)

# Special Protection Areas



## Laois

Sample of the qualifying interests for the Special Protection Area of Laois:  
Hen Harrier (*Circus cyaneus*)

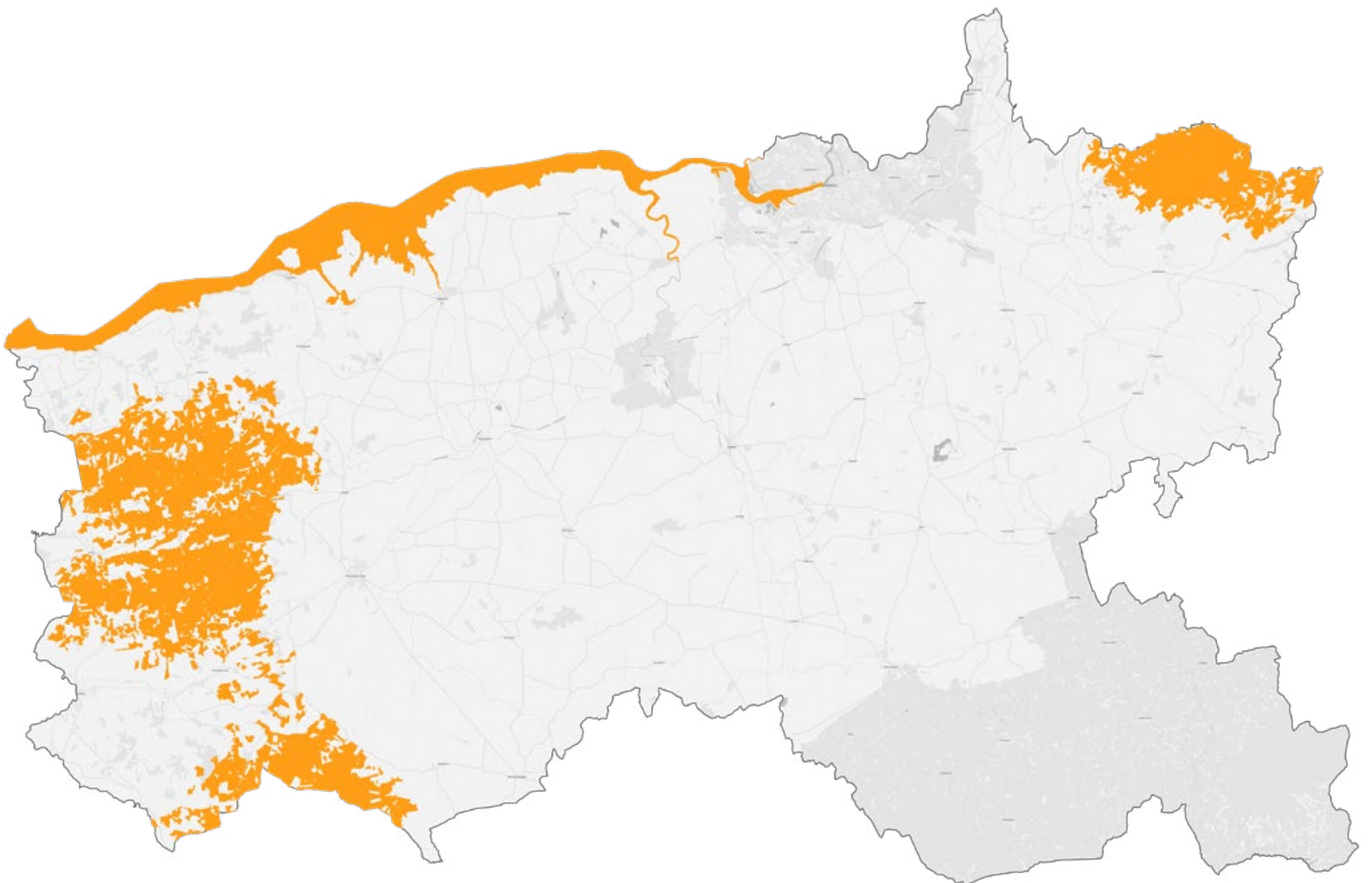
# Special Protection Areas



## Leitrim

**Sample of the qualifying interests for the Special Protection Area of Leitrim:**  
Peregrine (*Falco peregrinus*), Chough (*Pyrrhocorax pyrrhocorax*)

# Special Protection Areas

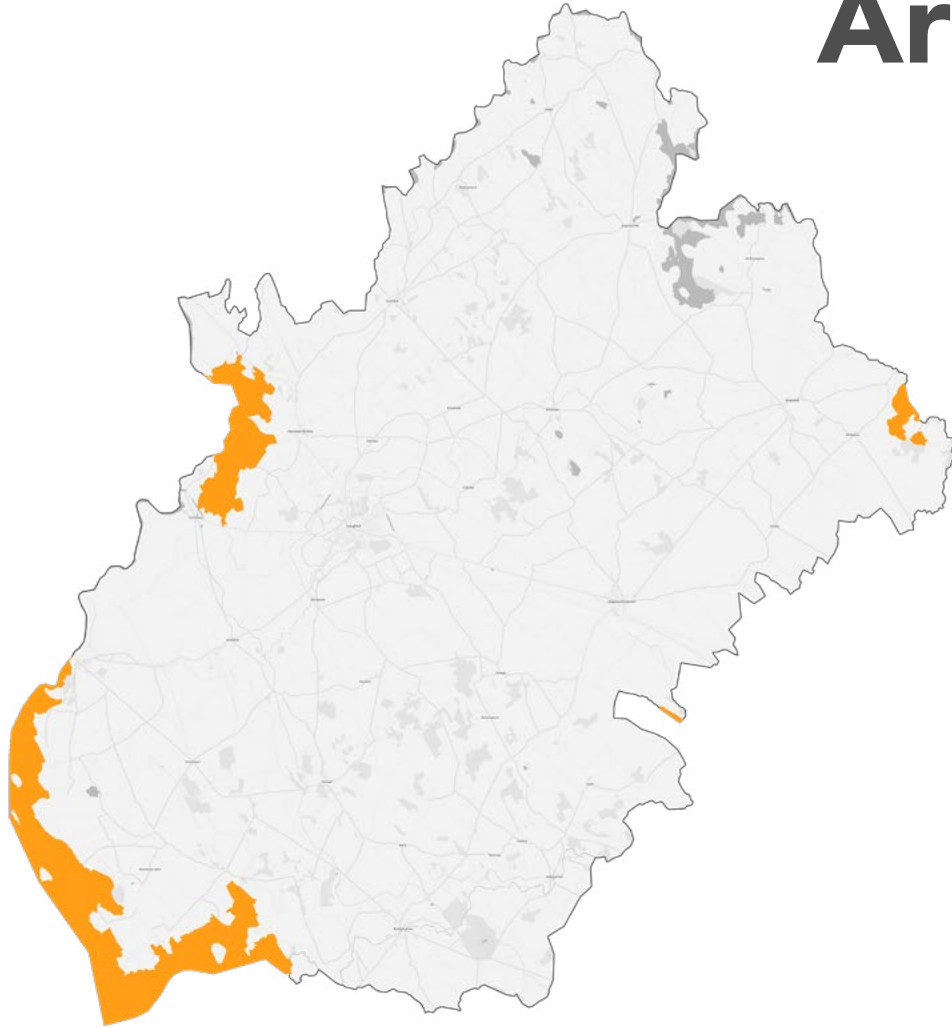


## Limerick

**Sample of the qualifying interests for the Special Protection Area of Limerick:**

Cormorant (*Phalacrocorax carbo*), Whooper Swan (*Cygnus cygnus*), Light-bellied Brent Goose (*Branta bernicla hrota*), Shelduck (*Tadorna tadorna*), Wigeon (*Anas penelope*), Teal (*Anas crecca*), Pintail (*Anas acuta*), Shoveler (*Anas clypeata*), Scaup (*Aythya marila*), Ringed Plover (*Charadrius hiaticula*), Golden Plover (*Pluvialis apricaria*)

# Special Protection Areas

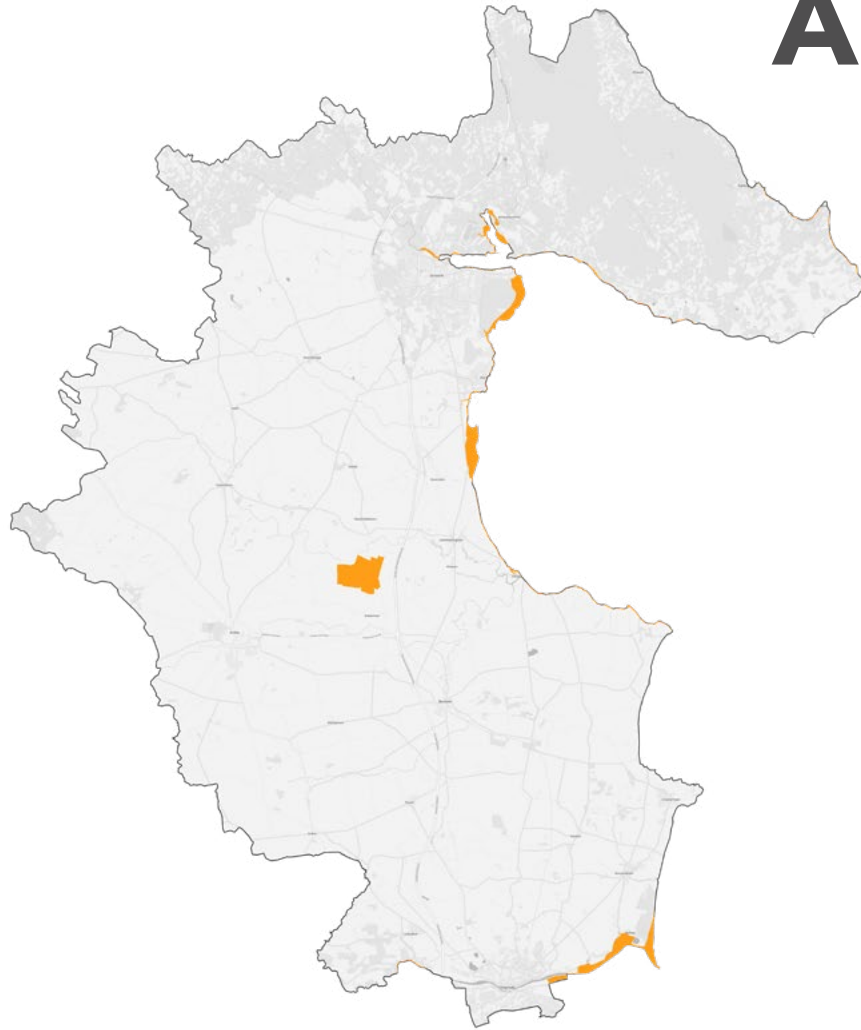


## Longford

### **Sample of the qualifying interests for the Special Protection Area of Longford:**

Greenland White-fronted Goose (*Anser albifrons flavirostris*), Little Grebe (*Tachybaptus ruficollis*), Whooper Swan (*Cygnus cygnus*), Wigeon (*Anas penelope*), Teal (*Anas crecca*), Mallard (*Anas platyrhynchos*), Shoveler (*Anas clypeata*), Tufted Duck (*Aythya fuligula*), Common Scoter (*Melanitta nigra*), Goldeneye (*Bucephala clangula*), Coot (*Fulica atra*), Golden Plover (*Pluvialis apricaria*), Lapwing (*Vanellus vanellus*)

# Special Protection Areas



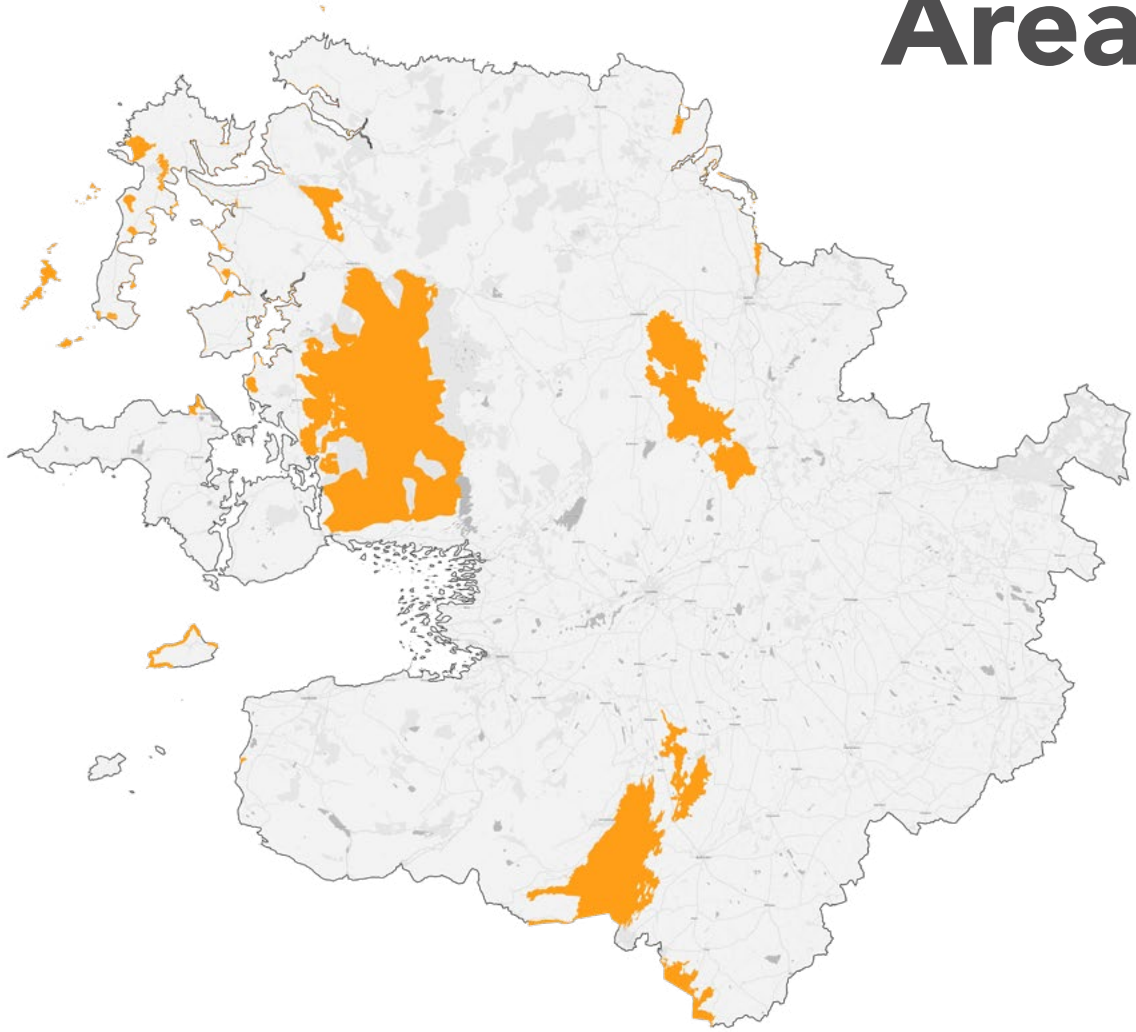
## Louth

### Sample of the qualifying interests for the Special Protection Area of Louth:

Light-bellied Brent Goose (*Branta bernicla hrota*), Wetland and Waterbird, Great Crested Grebe (*Podiceps cristatus*), Greylag Goose (*Anser anser*), Light-bellied Brent Goose (*Branta bernicla hrota*), Shelduck (*Tadorna tadorna*), Teal (*Anas crecca*), Mallard (*Anas platyrhynchos*), Pintail (*Anas acuta*), Common Scoter (*Melanitta nigra*), Red-breasted Merganser (*Mergus serrator*)



# Special Protection Areas



## Mayo

**Sample of the qualifying interests for the Special Protection Area of Mayo:**

Tufted Duck (*Aythya fuligula*), Common Scoter (*Melanitta nigra*), Common Gull (*Larus canus*), Greenland White-fronted Goose (*Anser albifrons flavirostris*), Wetland and Waterbirds, Storm Petrel (*Hydrobates pelagicus*), Puffin (*Fratercula arctica*), Barnacle Goose (*Branta leucopsis*)

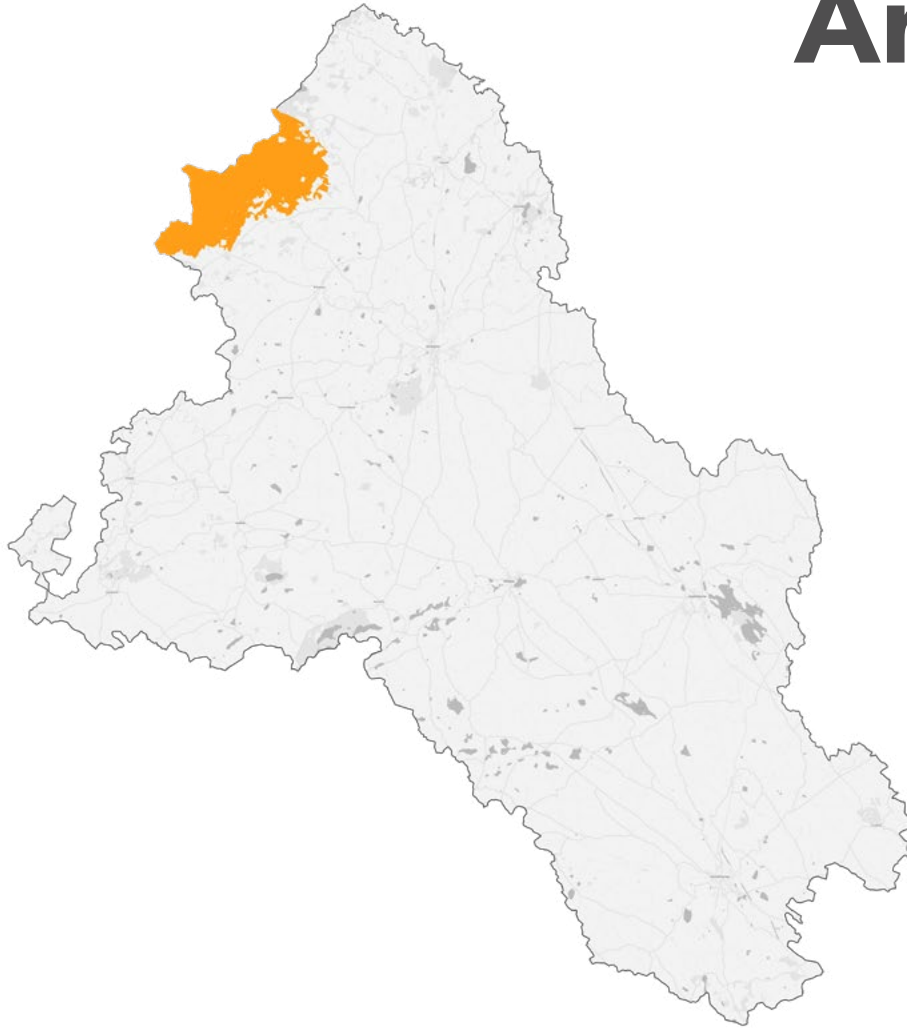
# Special Protection Areas



## Meath

**Sample of the qualifying interests for the Special Protection Area of Meath:**  
Kingfisher (*Alcedo atthis*)

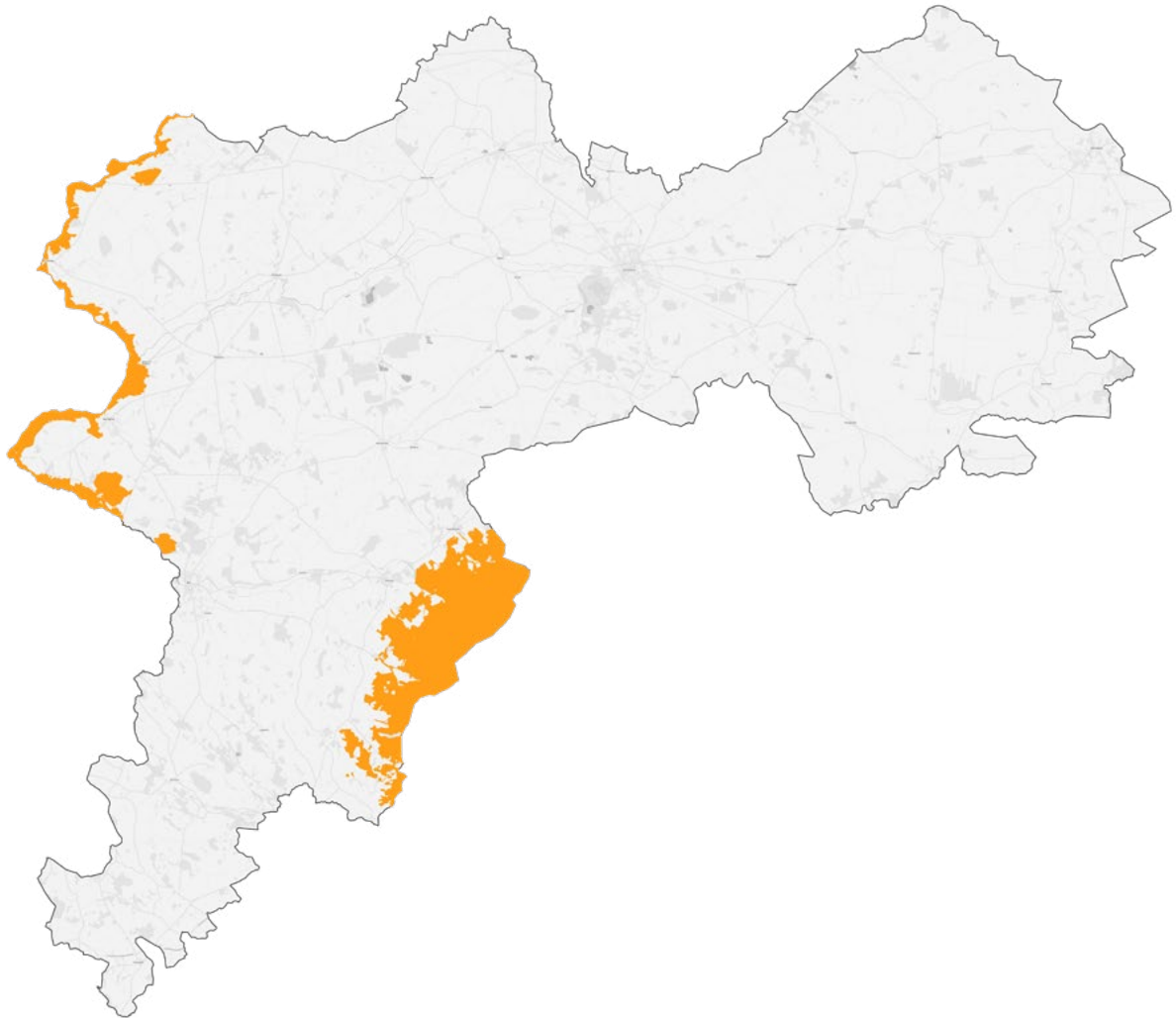
# Special Protection Areas



## Monaghan

**Sample of the qualifying interests for the Special Protection Area of Monaghan:**  
Hen Harrier (*Circus cyaneus*)

# Special Protection Areas

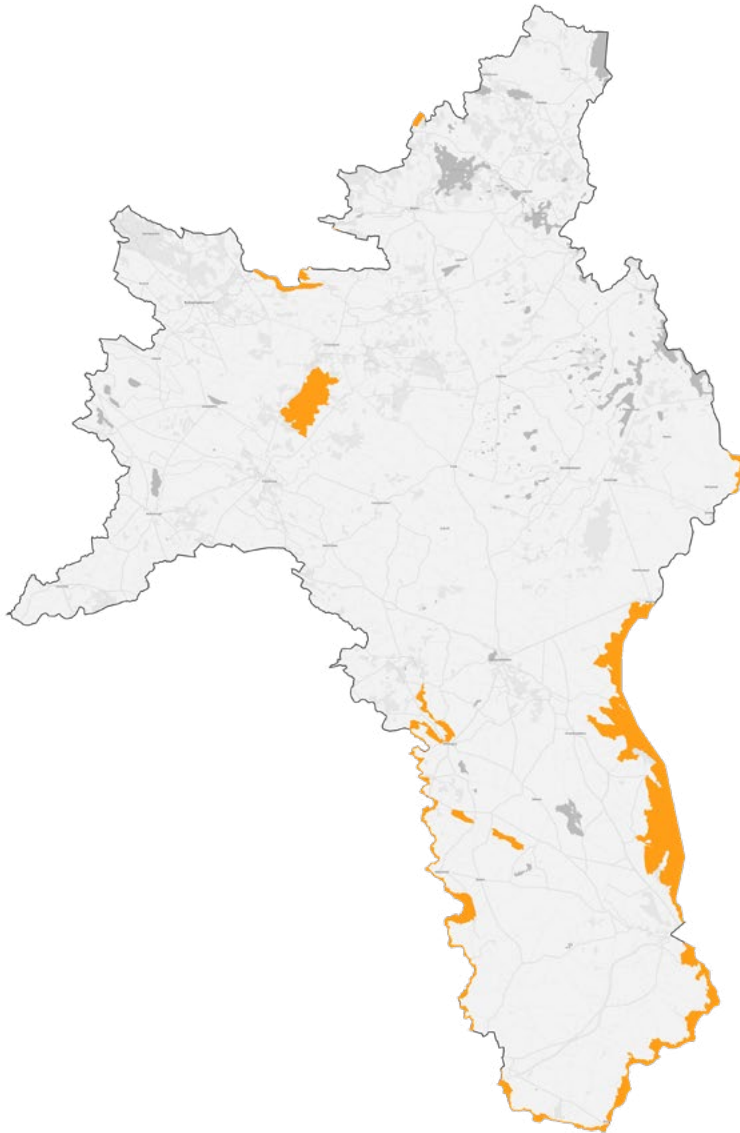


## Offaly

**Sample of the qualifying interests for the Special Protection Area of Offaly:**

Greenland White-fronted Goose (*Anser albifrons flavirostris*), Hen Harrier (*Circus cyaneus*), Whooper Swan (*Cygnus cygnus*), Wigeon (*Anas penelope*), Teal (*Anas crecca*), Pintail (*Anas acuta*), Shoveler (*Anas clypeata*), Golden Plover (*Pluvialis apricaria*), Lapwing (*Vanellus vanellus*), Black-tailed Godwit (*Limosa limosa*)

# Special Protection Areas

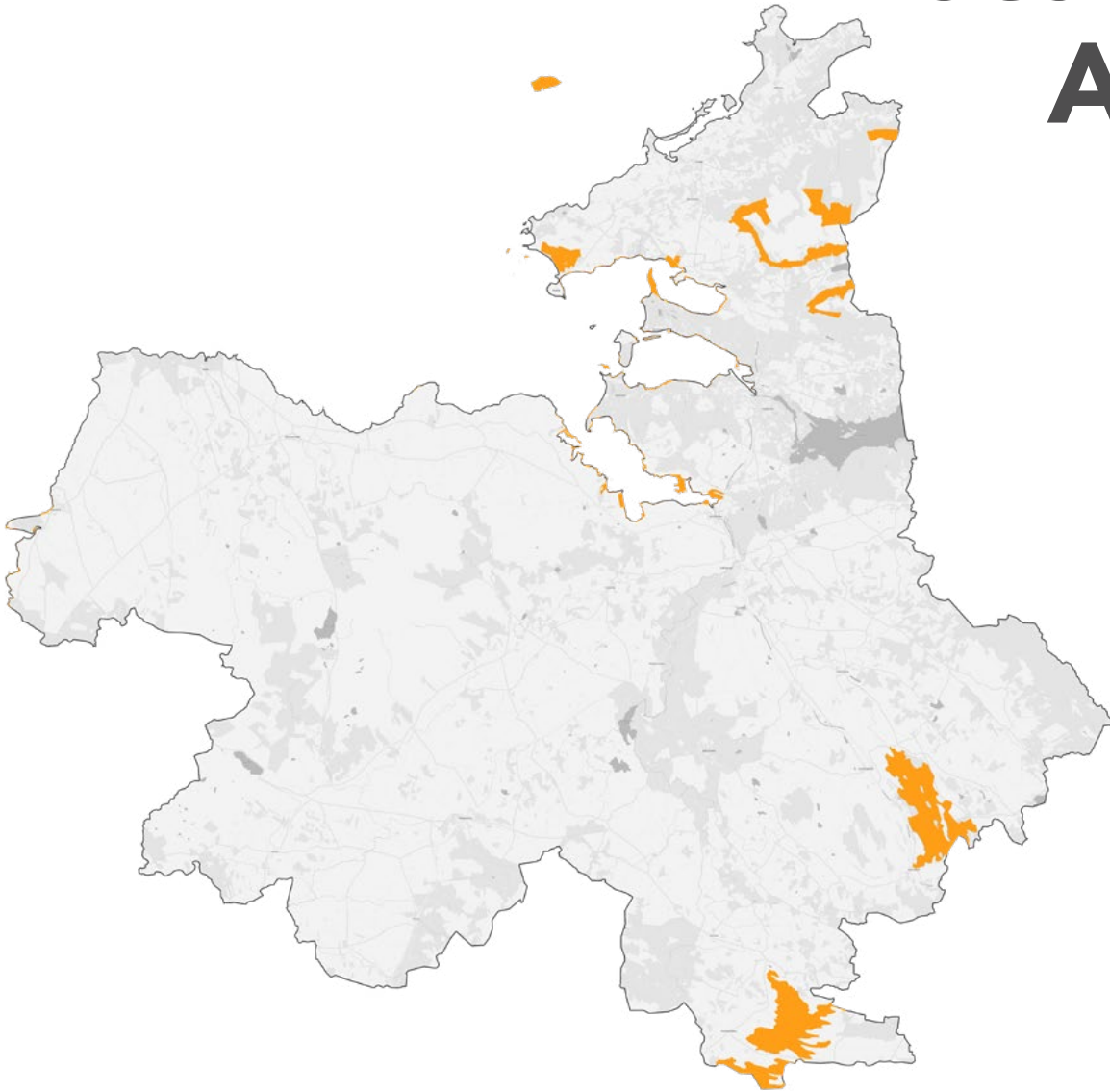


## Roscommon

**Sample of the qualifying interests for the Special Protection Area of Roscommon:**

Greenland White-fronted Goose (*Anser albifrons flavirostris*), Hen Harrier (*Circus cyaneus*), Whooper Swan (*Cygnus cygnus*), Wigeon (*Anas penelope*), Shoveler (*Anas clypeata*), Golden Plover (*Pluvialis apricaria*), Lapwing (*Vanellus vanellus*)

# Special Protection Areas

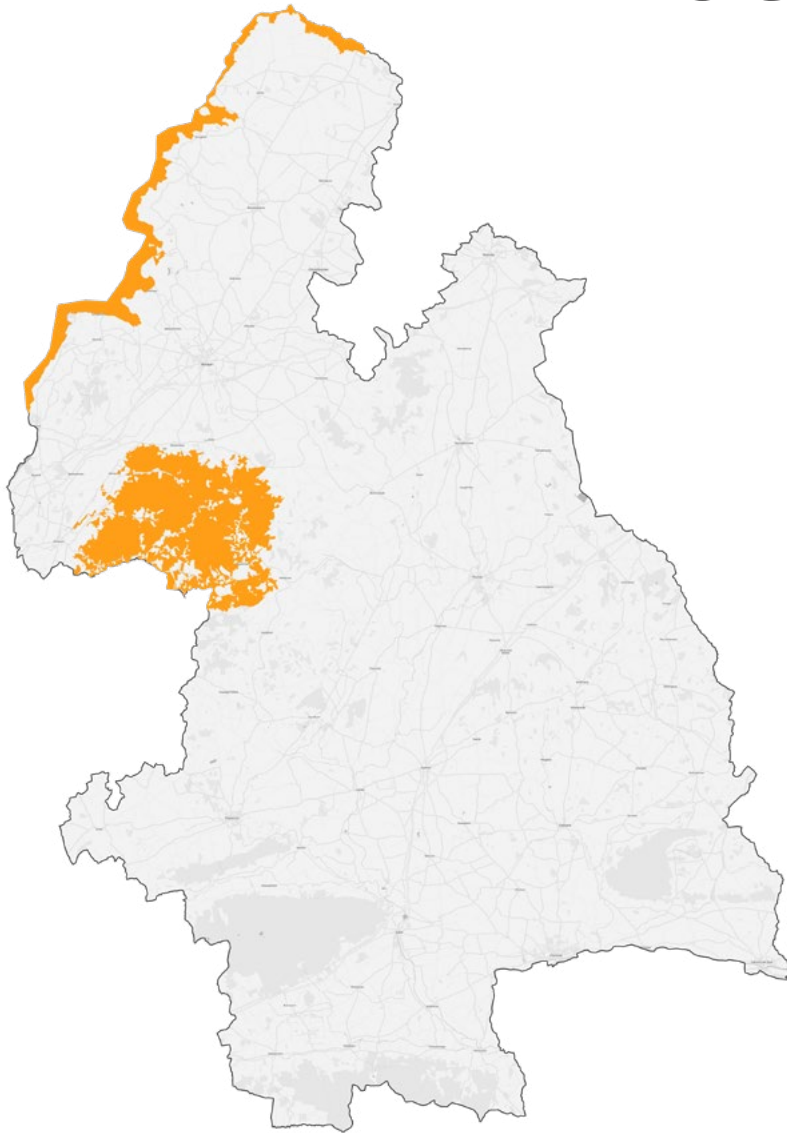


## Sligo

### Sample of the qualifying interests for the Special Protection Area of Sligo:

Greenland White-fronted Goose (*Anser albifrons flavirostris*), Kittiwake (*Rissa tridactyla*), Whooper Swan (*Cygnus cygnus*), Light-bellied Brent Goose (*Branta bernicla hrota*), Grey Plover (*Pluvialis squatarola*), Dunlin (*Calidris alpina*), Bar-tailed Godwit (*Limosa lapponica*), Redshank (*Tringa totanus*)

# Special Protection Areas



## Tipperary

**Sample of the qualifying interests for the Special Protection Area of Tipperary:**

Hen Harrier (*Circus cyaneus*), Cormorant (*Phalacrocorax carbo*), Tufted Duck (*Aythya fuligula*), Goldeneye (*Bucephala clangula*), Common Tern (*Sterna hirundo*), Wetland and Waterbirds

# Special Protection Areas



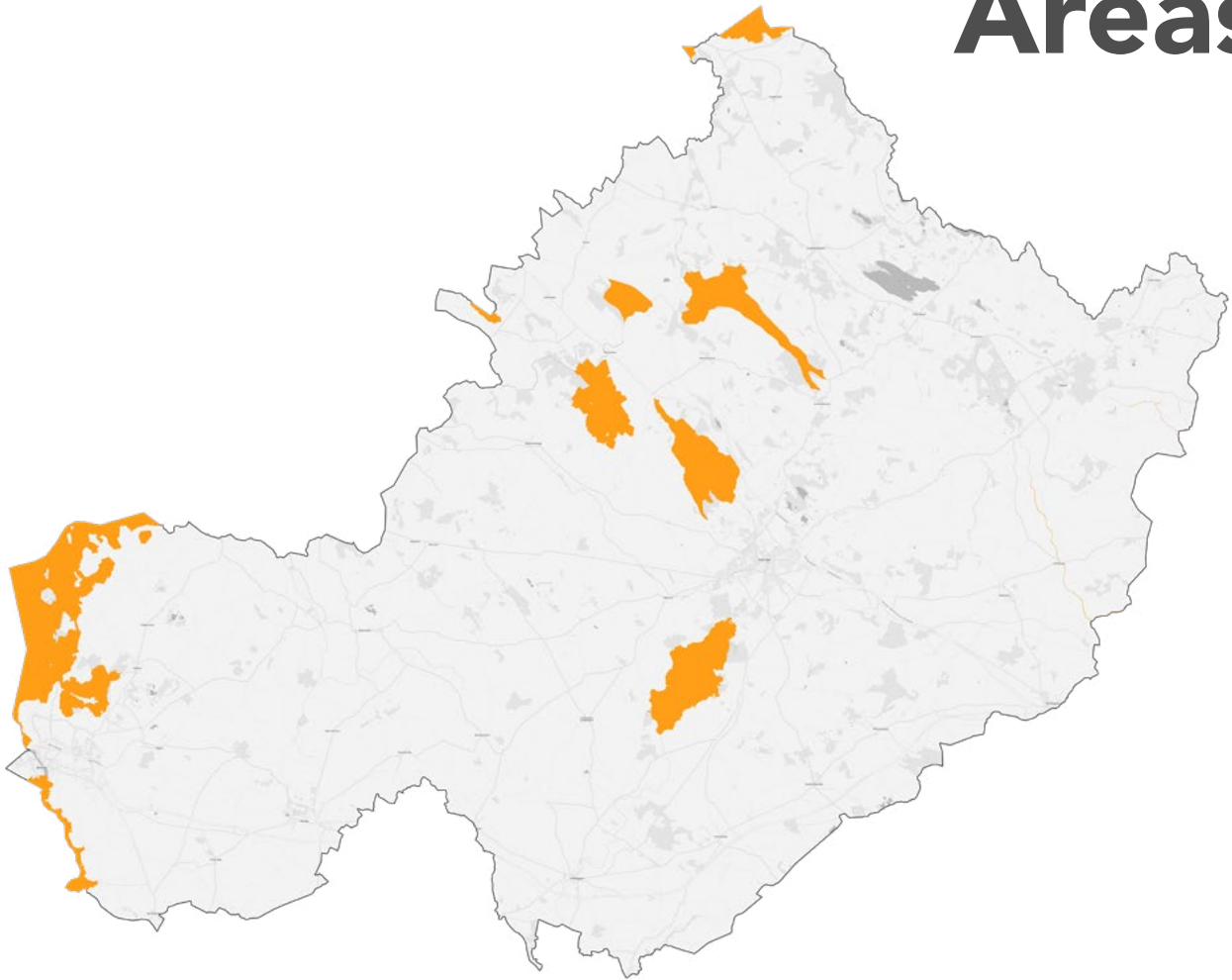
## Waterford

**Sample of the qualifying interests for the Special Protection Area of Waterford:**

Wigeon (*Anas penelope*), Golden Plover (*Pluvialis apricaria*), Lapwing (*Vanellus vanellus*), Greenland White-fronted Goose (*Anser albifrons flavirostris*), Wetland and Waterbird, Bewick's Swan (*Cygnus columbianus bewickii*), Red-breasted Merganser (*Mergus serrator*), Curlew (*Numenius arquata*), Lesser Black-backed Gull (*Larus fuscus*)



# Special Protection Areas

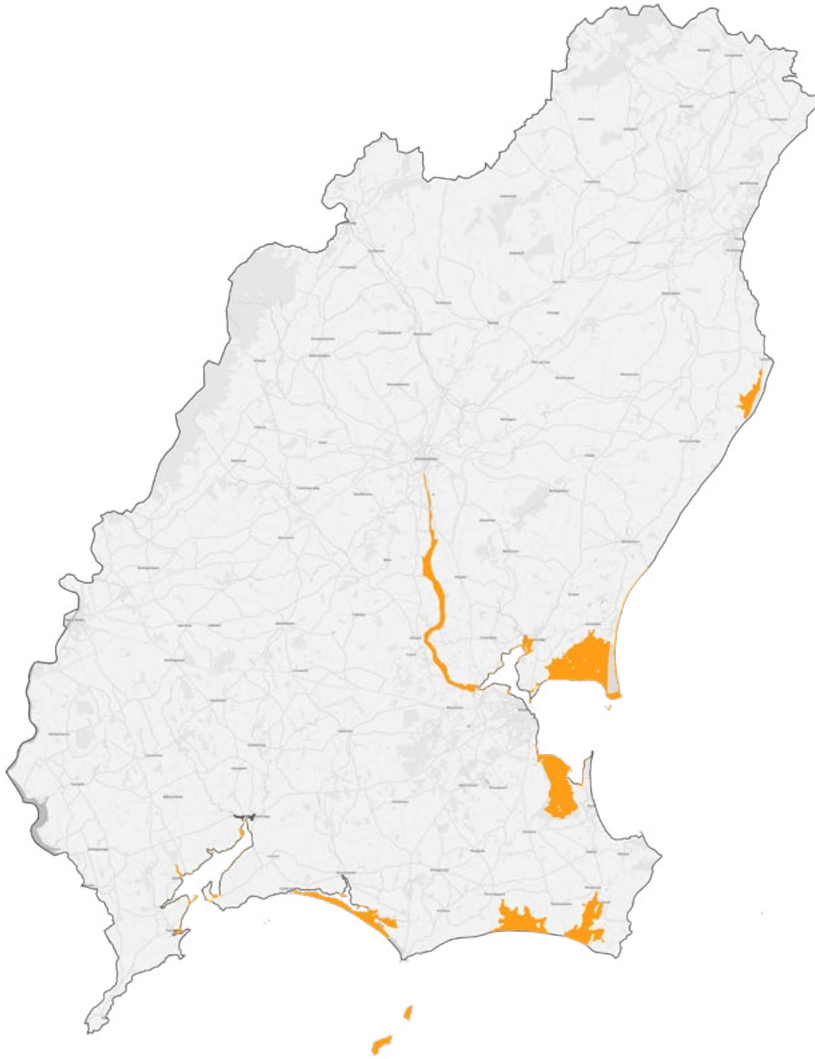


## Westmeath

**Sample of the qualifying interests for the Special Protection Area of Westmeath:**

Pochard (*Aythya ferina*), Tufted Duck (*Aythya fuligula*), Coot (*Fulica atra*), Wetland and Waterbirds, Common Scoter (*Melanitta nigra*), Goldeneye (*Bucephala clangula*), Coot (*Fulica atra*), Golden Plover (*Pluvialis apricaria*), Lapwing (*Vanellus vanellus*), Common Tern (*Sterna hirundo*)

# Special Protection Areas

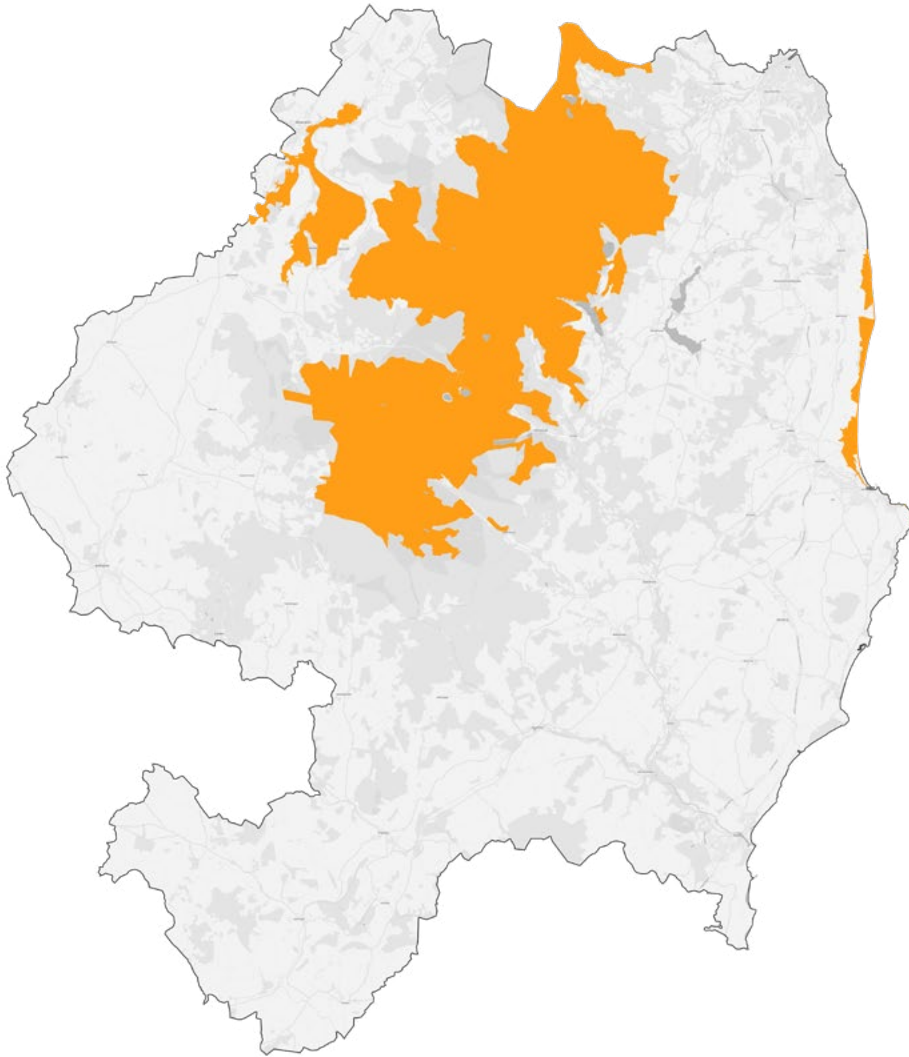


## Wexford

**Sample of the qualifying interests for the Special Protection Area of Wexford:**

Wigeon (*Anas penelope*), Golden Plover (*Pluvialis apricaria*), Lapwing (*Vanellus vanellus*), Greenland White-fronted Goose (*Anser albifrons flavirostris*), Wetland and Waterbirds, Herring Gull (*Larus argentatus*), Kittiwake (*Rissa tridactyla*), Guillemot (*Uria aalge*), Razorbill (*Alca torda*), Puffin (*Fratercula arctica*)

# Special Protection Areas



## Wicklow

**Sample of the qualifying interests for the Special Protection Area of Wicklow:**

Kittiwake (*Rissa tridactyla*), Merlin (*Falco columbarius*), Peregrine (*Falco peregrinus*), Wigeon (*Anas penelope*), Wetland and Waterbirds, Red-throated Diver (*Gavia stellata*), Greylag Goose (*Anser anser*), Light-bellied Brent Goose (*Branta bernicla hrota*), Herring Gull (*Larus argentatus*)

